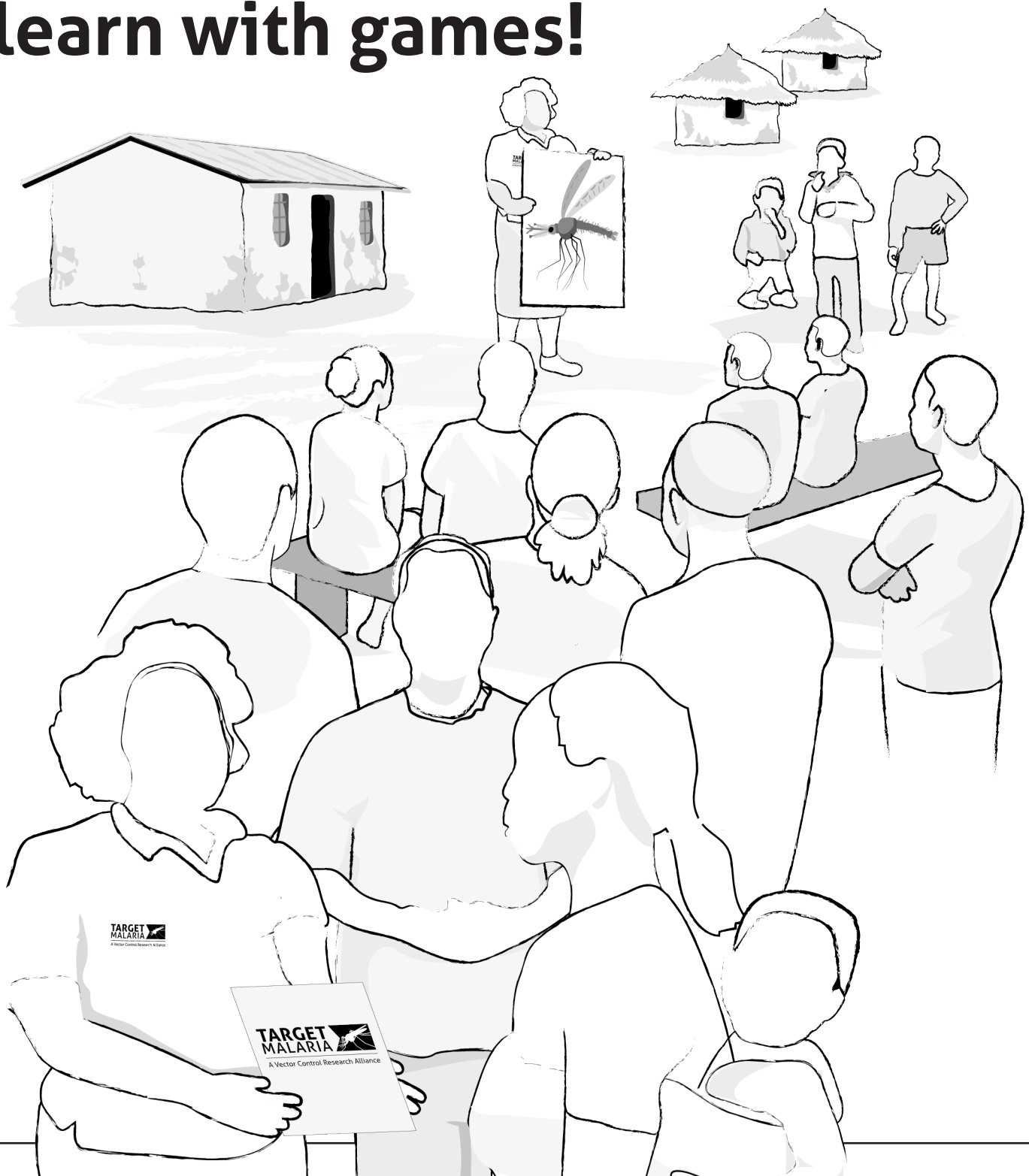
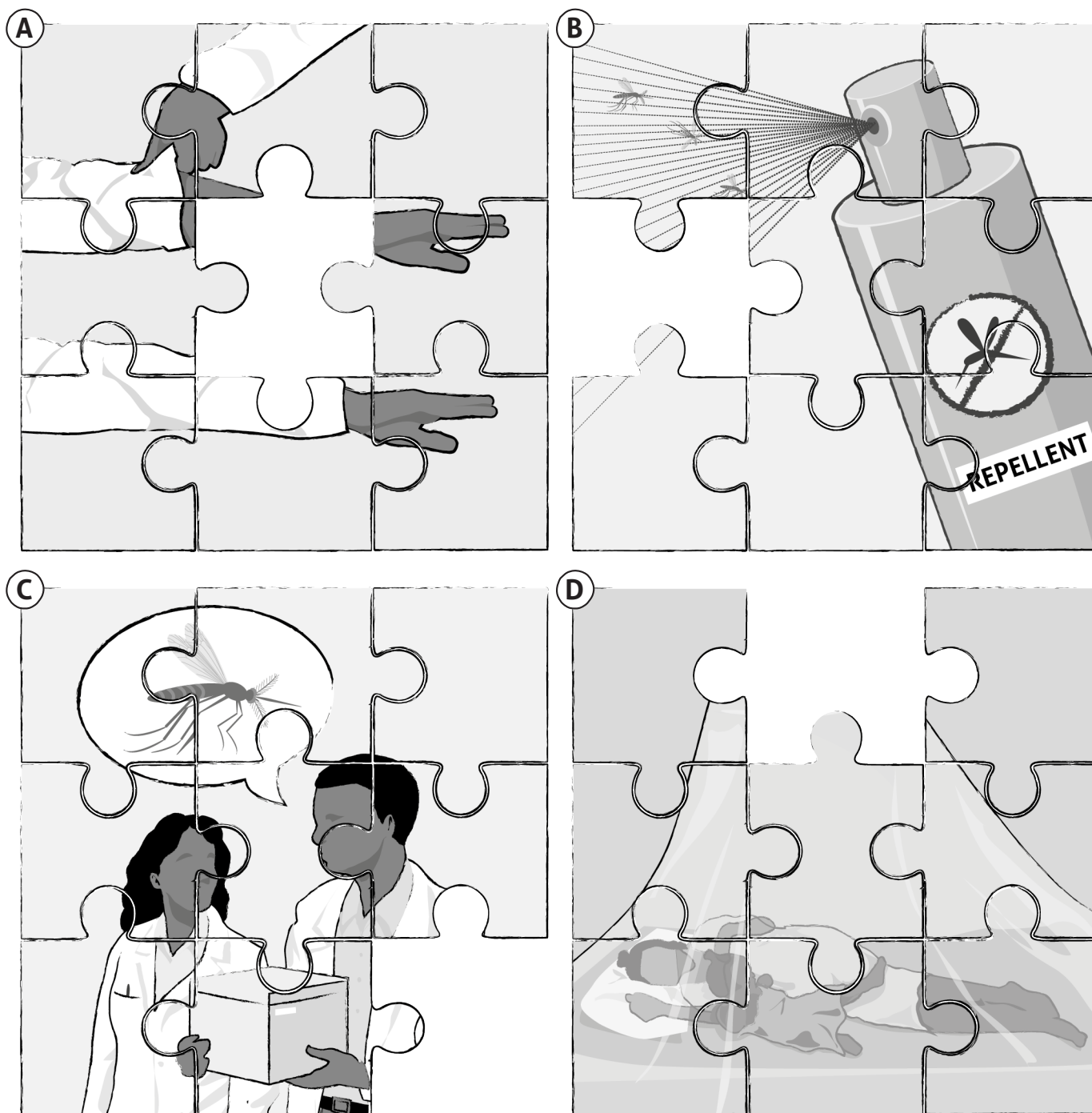


TARGET MALARIA

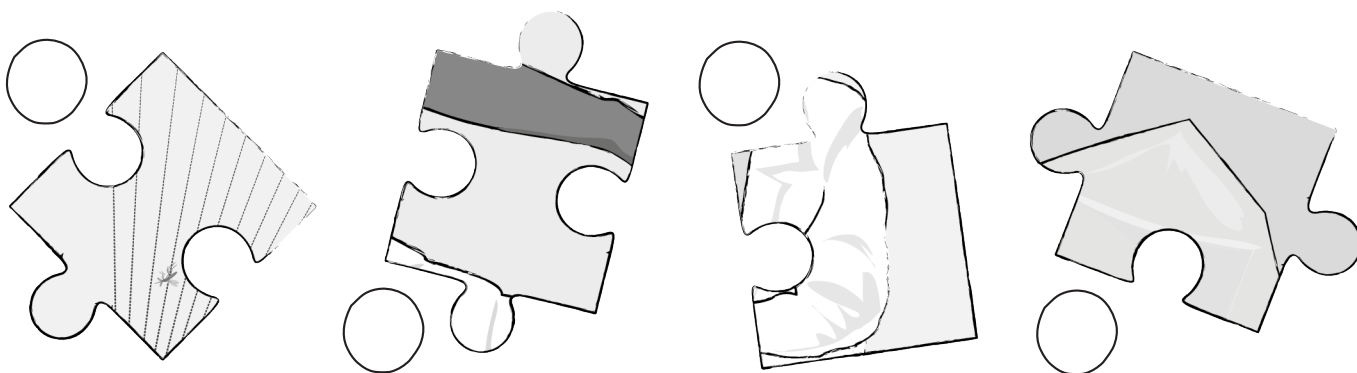
learn with games!



Target Malaria's idea for malaria control



...can you complete the jigsaw puzzles?



How malaria is transmitted...

Join the dots to see
the female mosquito

Only female
mosquitoes
bite humans

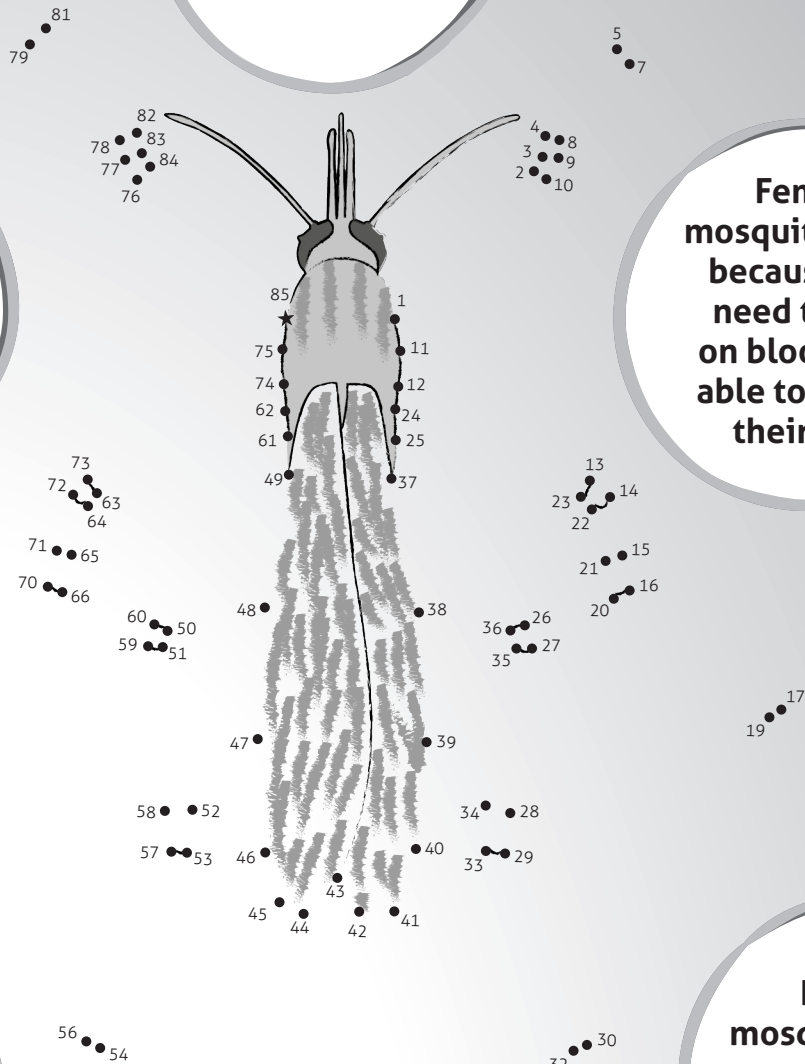
Once malaria
develops the
infected person
falls sick

Female
mosquitoes bite
because they
need to feed
on blood to be
able to mature
their eggs

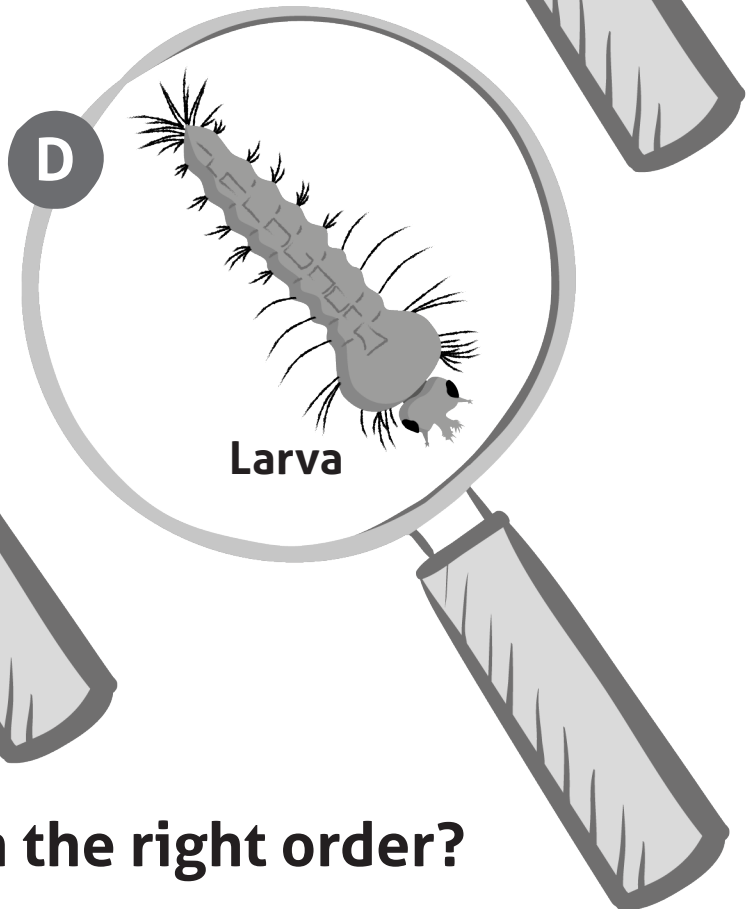
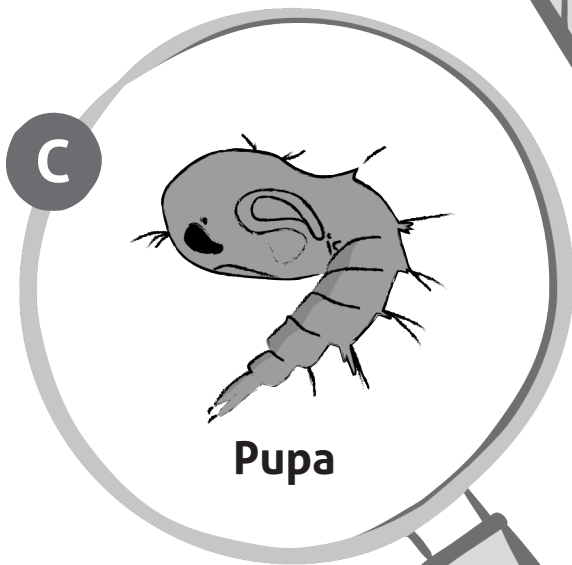
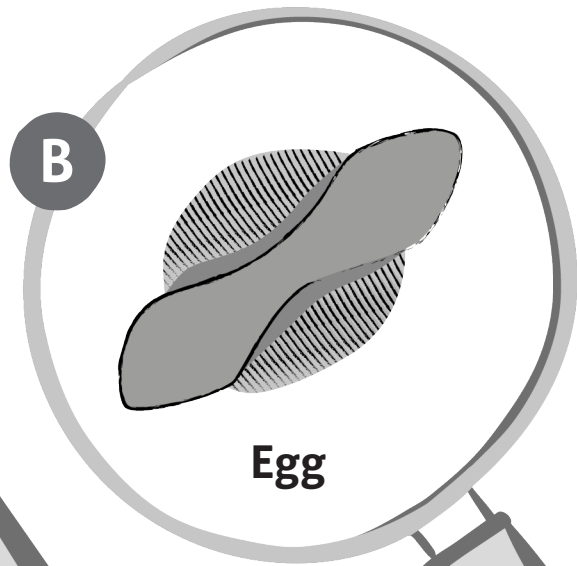
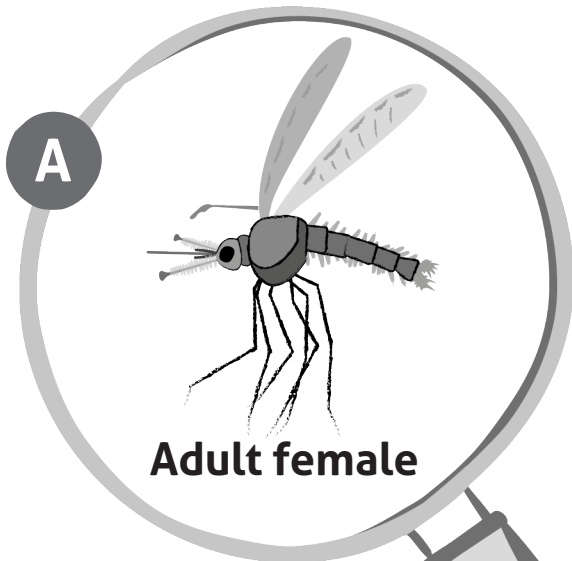
It can then
be passed on to
another person
when the mosquito
bites again

Female
mosquitoes pick
up the malaria
parasite when
they bite an
already infected
person

Female
mosquitoes bite
most between
sunset and
sunrise



These are the 4 life stages of a mosquito...

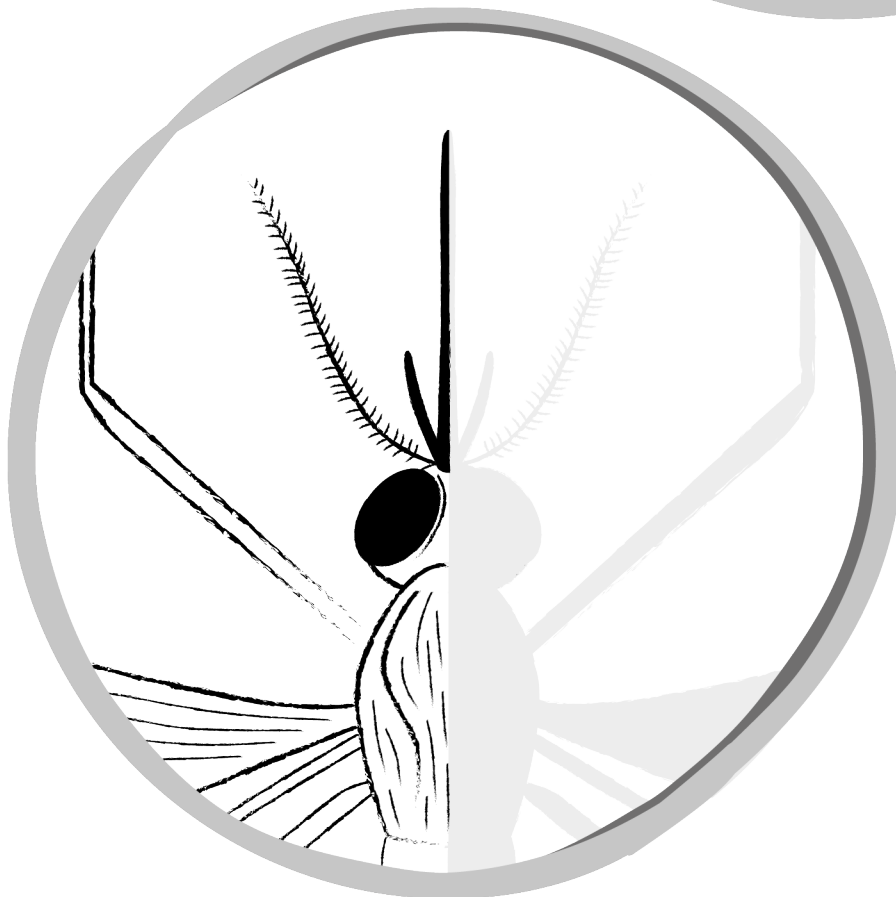
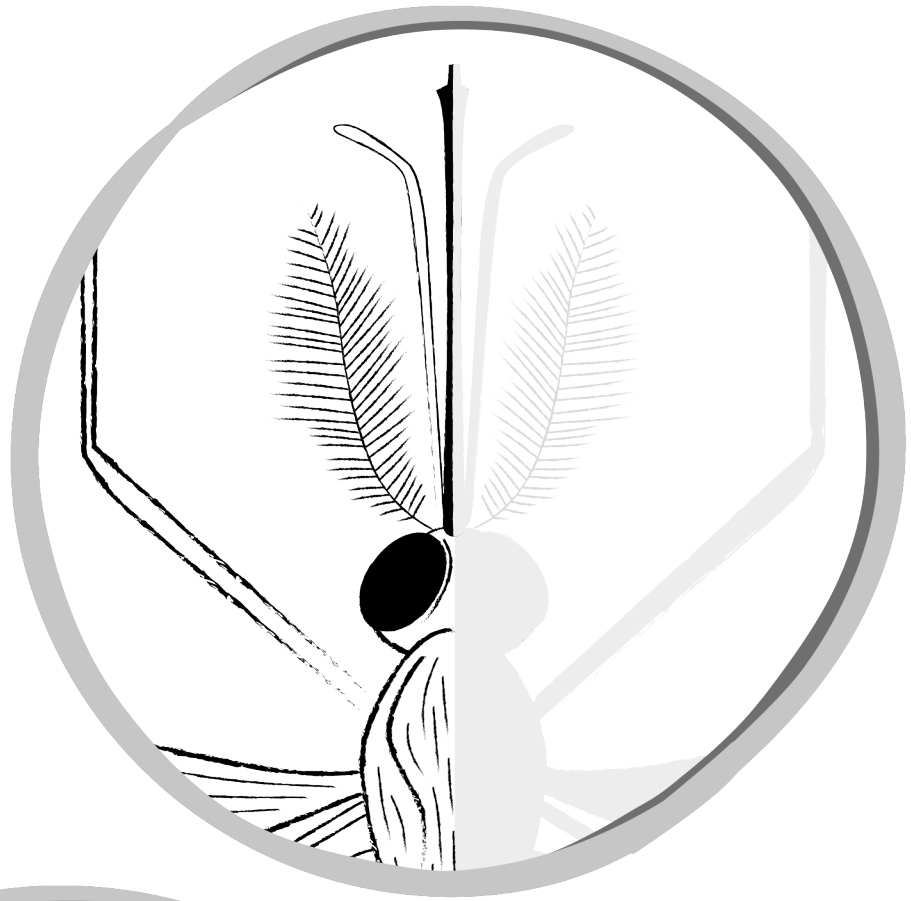


...can you put them in the right order?

Here are the differences between a male and female mosquito, can you finish the drawing?

Male

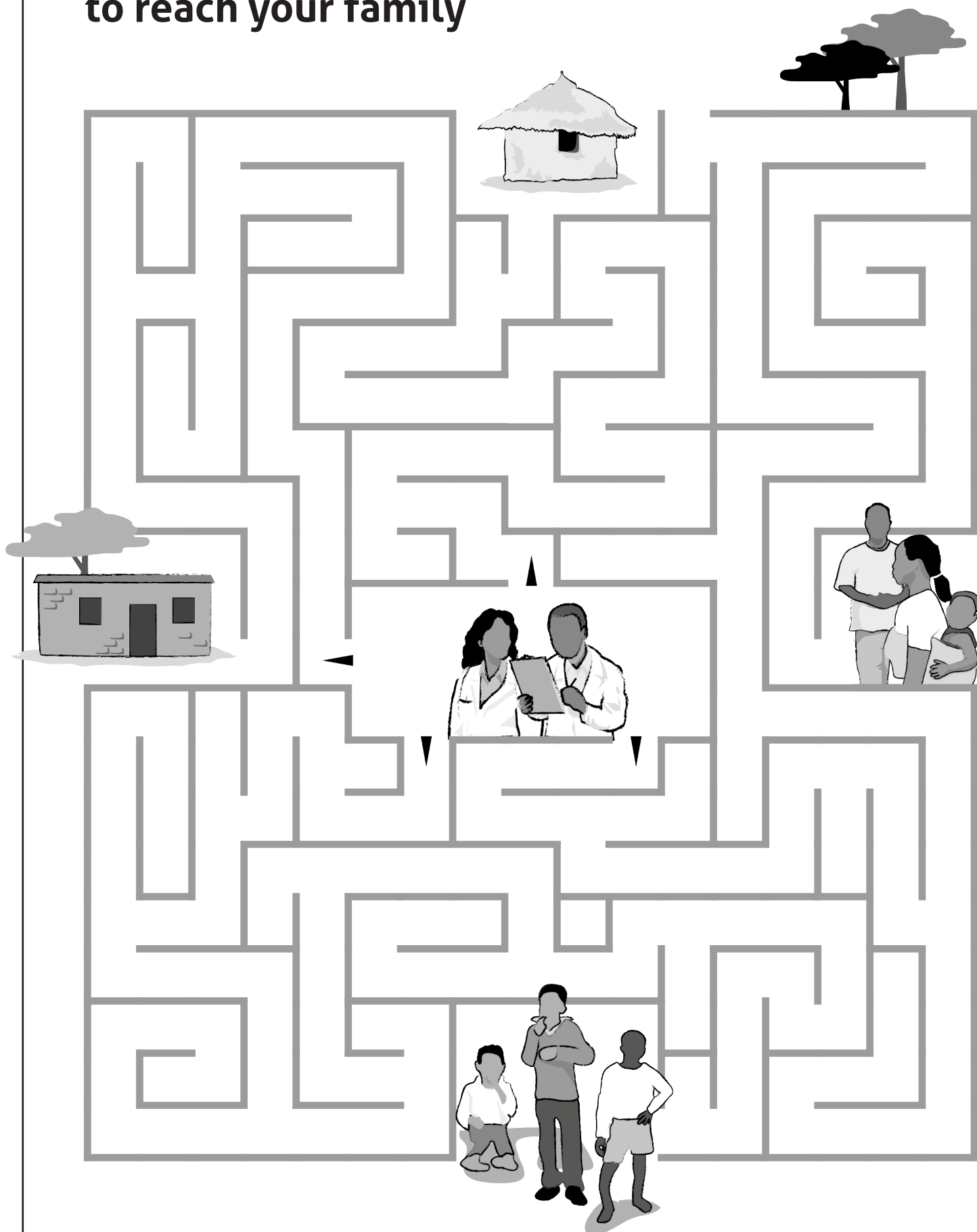
*Anopheles
gambiae*
mosquito



Female

*Anopheles
gambiae*
mosquito

Help the Target Malaria team to reach your family



Target Malaria works on 3 major species of malaria transmitting mosquitoes, can you spot the names in the word search below?



The three names are...
coluzzii, arabiensis and gambiae.

Also hidden in the puzzle are...



Bite
Malaria
Anopheles
Parasite
Spray

Mosquito
Pupa
Larva
Female
Net



Target Malaria currently works in three countries in Africa

Can you finish off the names below?

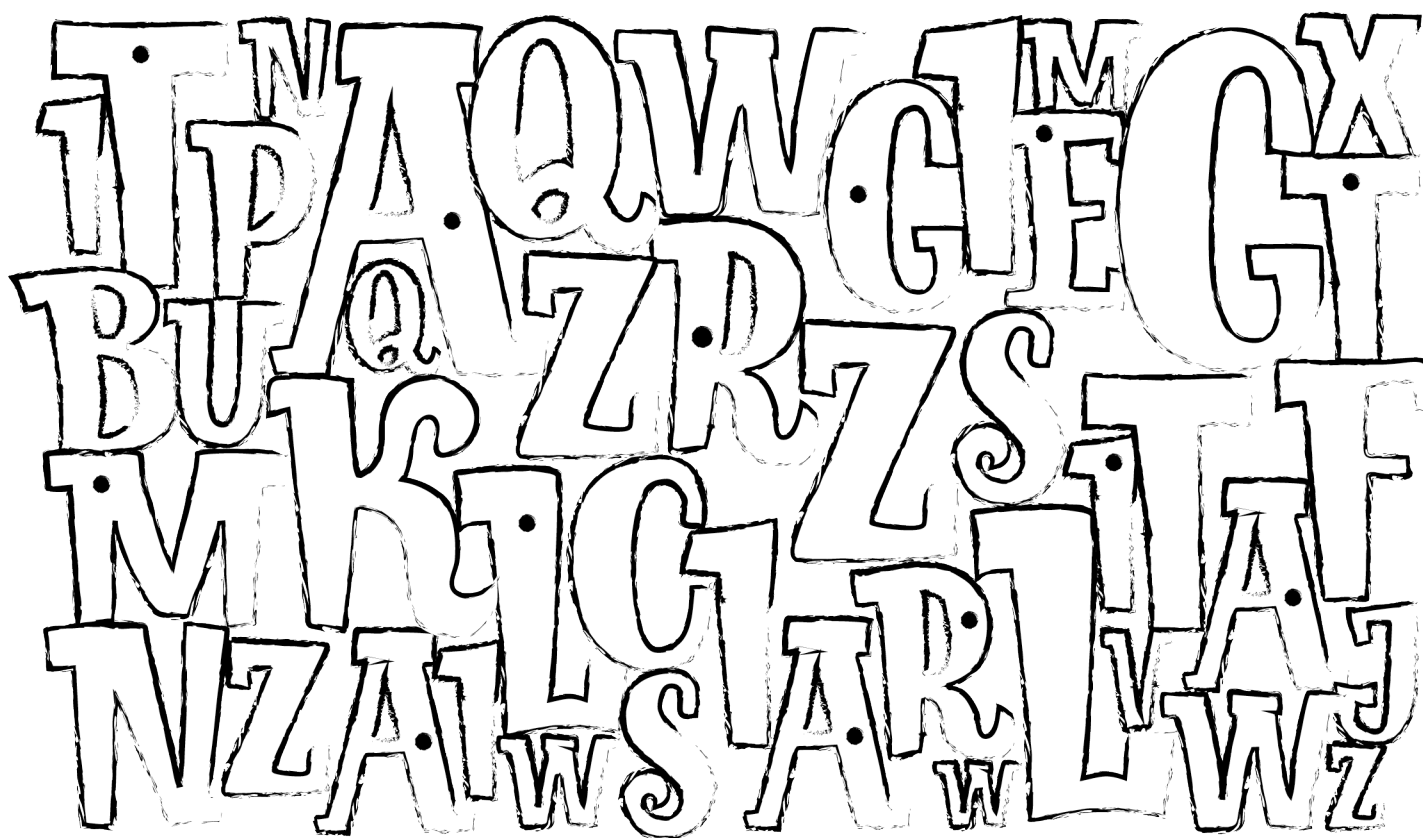
Burkina Faso

Ghana

Uganda



Colour the letters that have a dot to read the message...



Together we can end malaria.